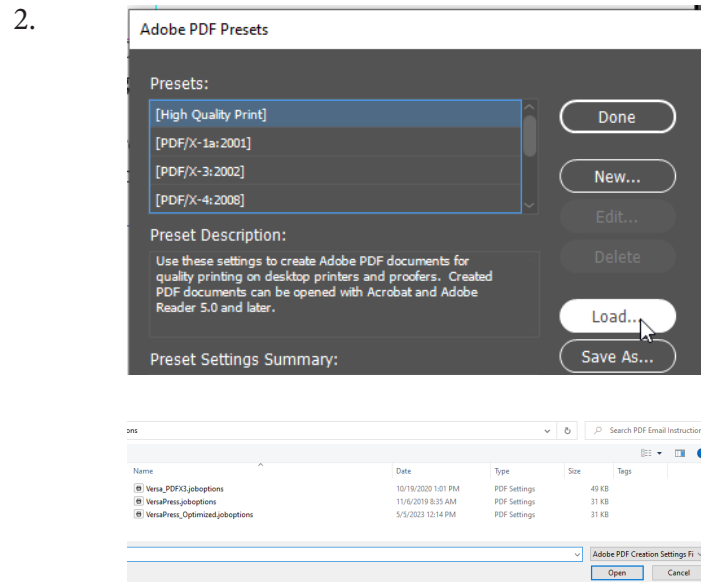
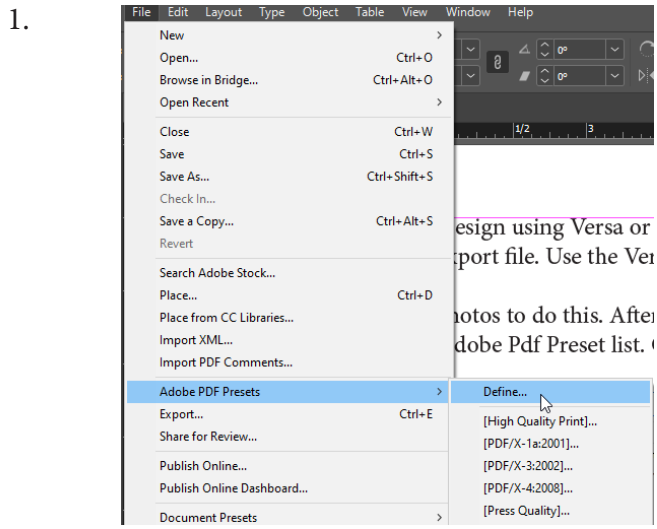
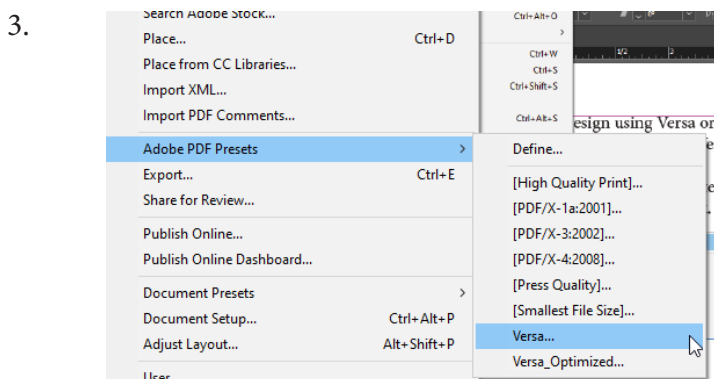


Generating a pdf in InDesign (Mac or Windows) using Versa or Versa_Optimized PDF presets.

Steps 1 and 2 show how to import the Versa PDF Export setting. Use the Versa_Optimized Pdf Preset if your files total over 2gb. After loading the preset correctly, “Versa” or “Versa_Optimized” will show up as an option in the Adobe Pdf Presets list.



Open your file and as shown in Step 3, select the appropriate Versa PDF preset.



Step 4. All settings should remain at the default Versa settings. Page Range can be changed if you are only needing to pdf certain pages. Clicking Export will bring up Step 5. Name your file, select where to save the file and click Save.

