

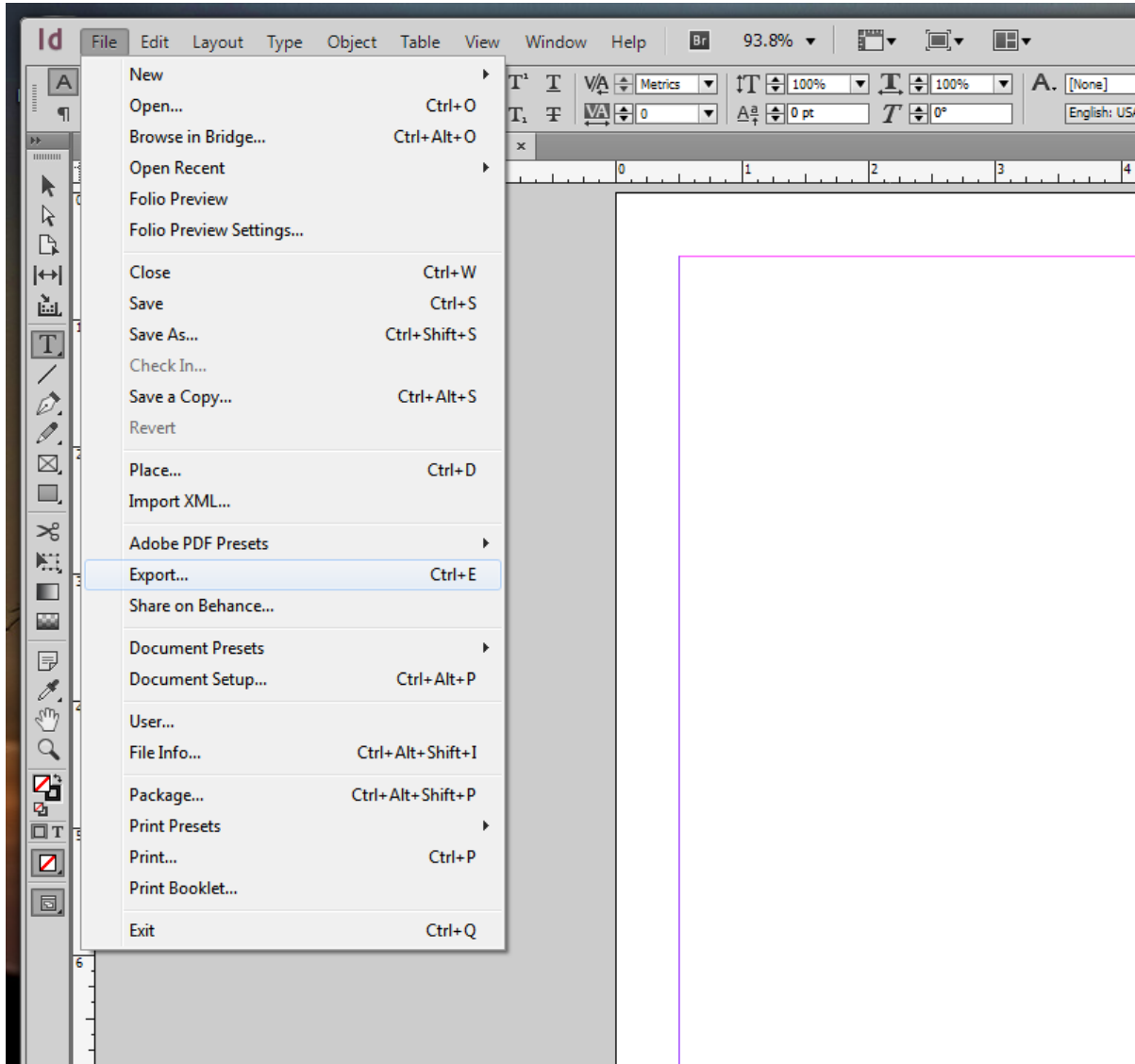
# Versa Press, Inc.



## Adobe InDesign Export Settings for PC

### Step 1

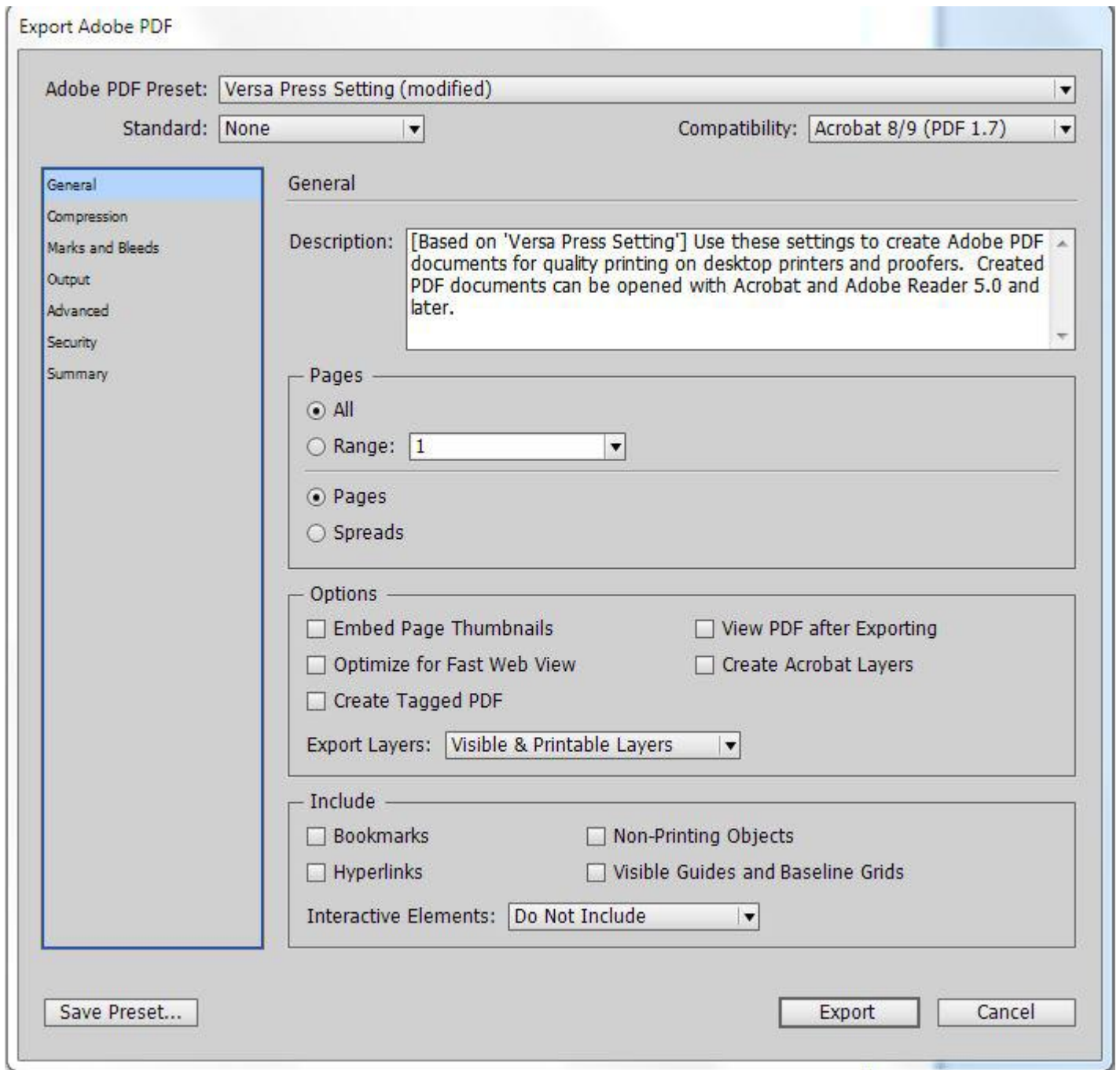
- Open Your Document.
- Select File > Export... from the tool bar



## Adobe InDesign Export Settings for PC

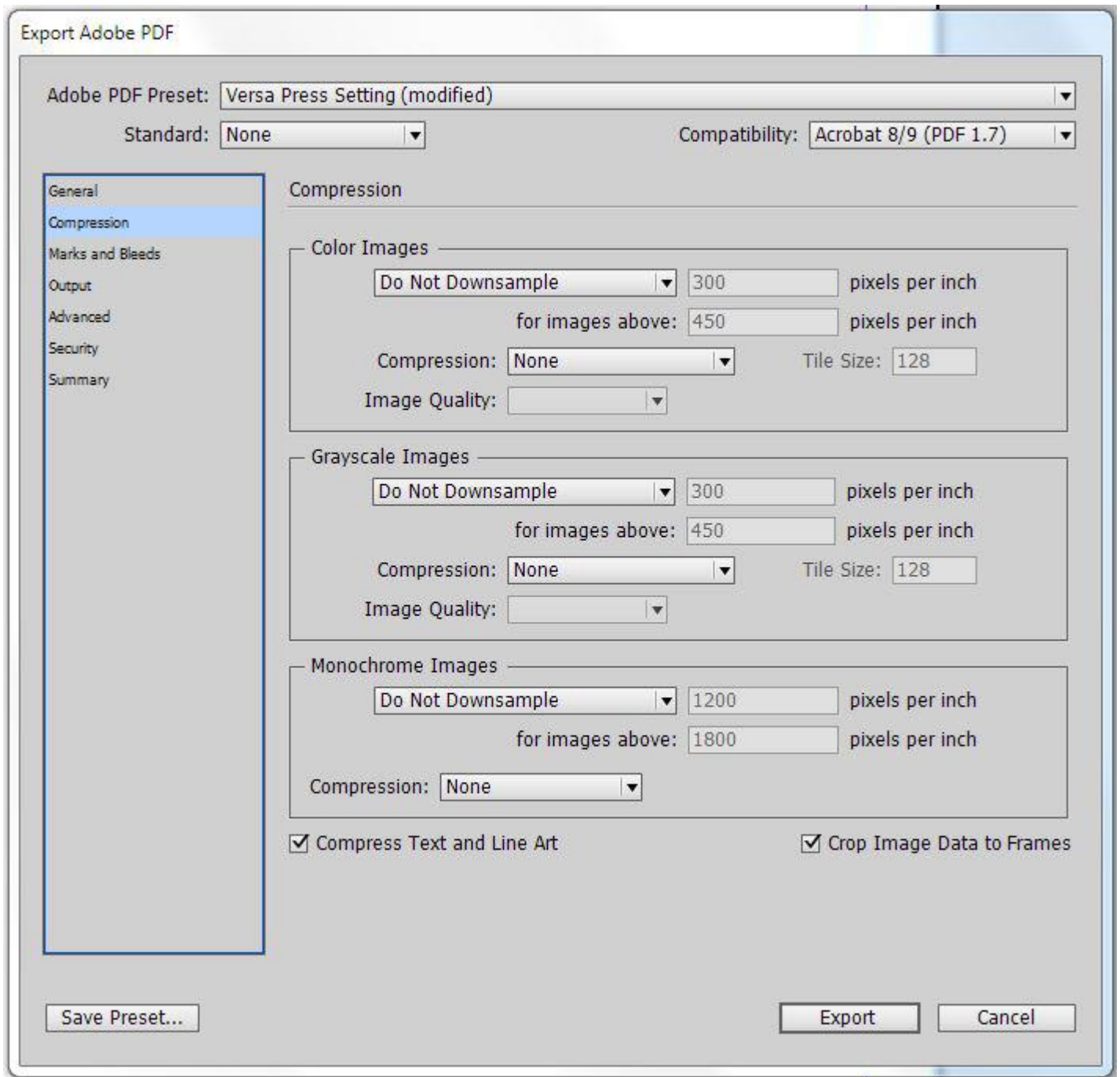
### Step 2

- Select the **General** tab.
- Adjust your settings to match the following illustration.



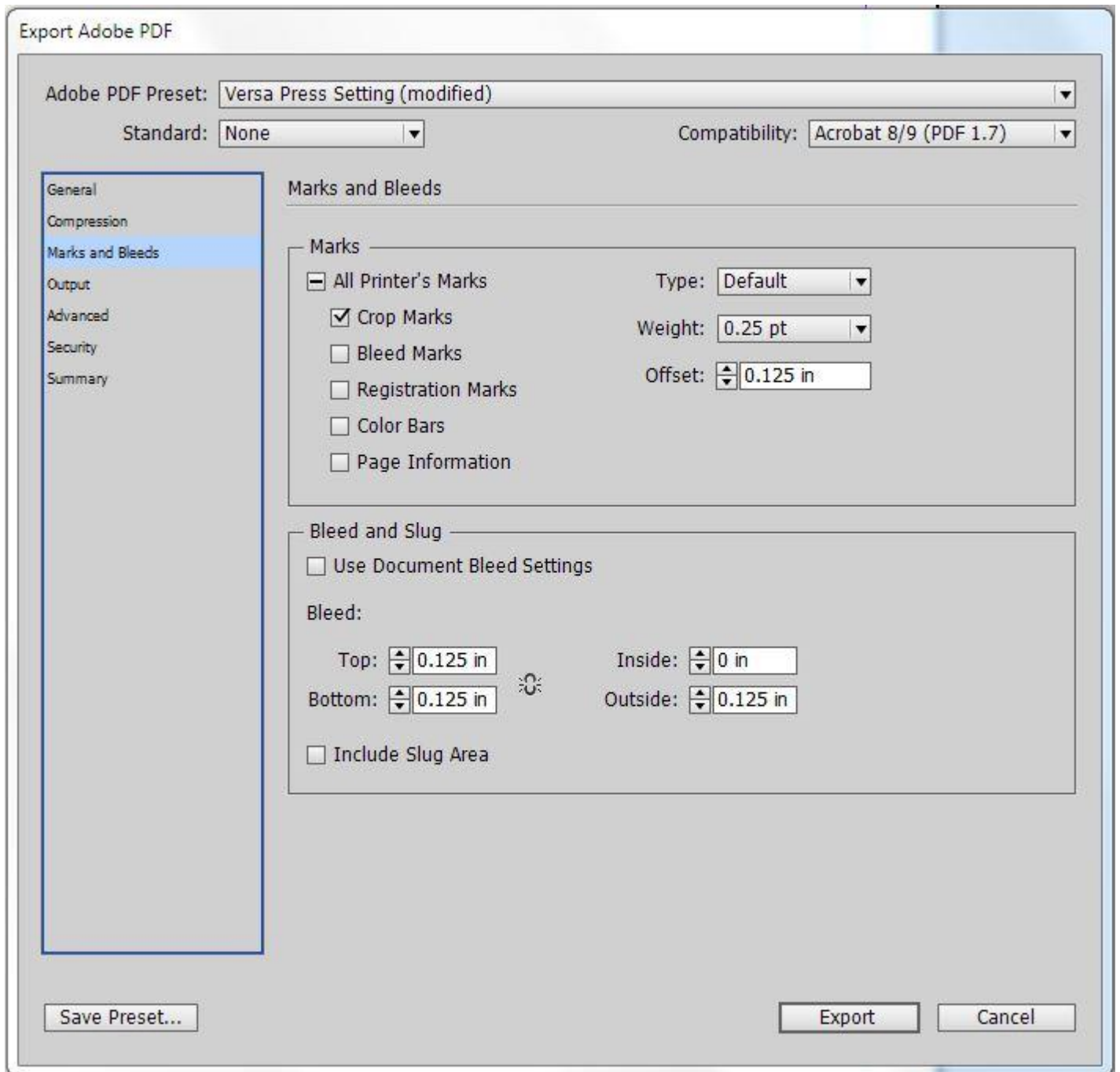
Step 3

- Select the **Compression** tab.
- Adjust your settings to match the following illustration.



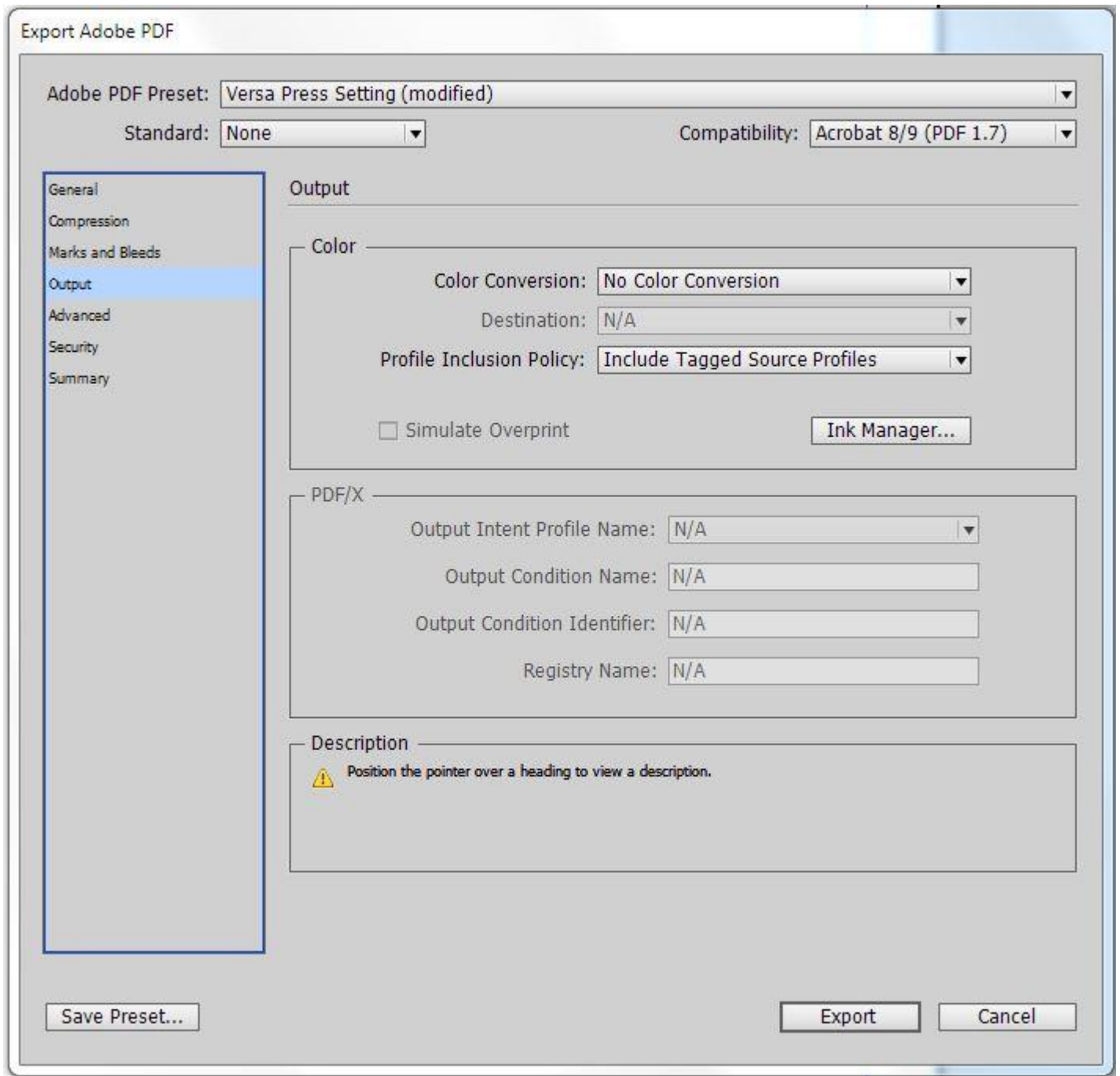
Step 4

- Select the **Marks and Bleeds** tab.
- Adjust your settings to match the following illustration.



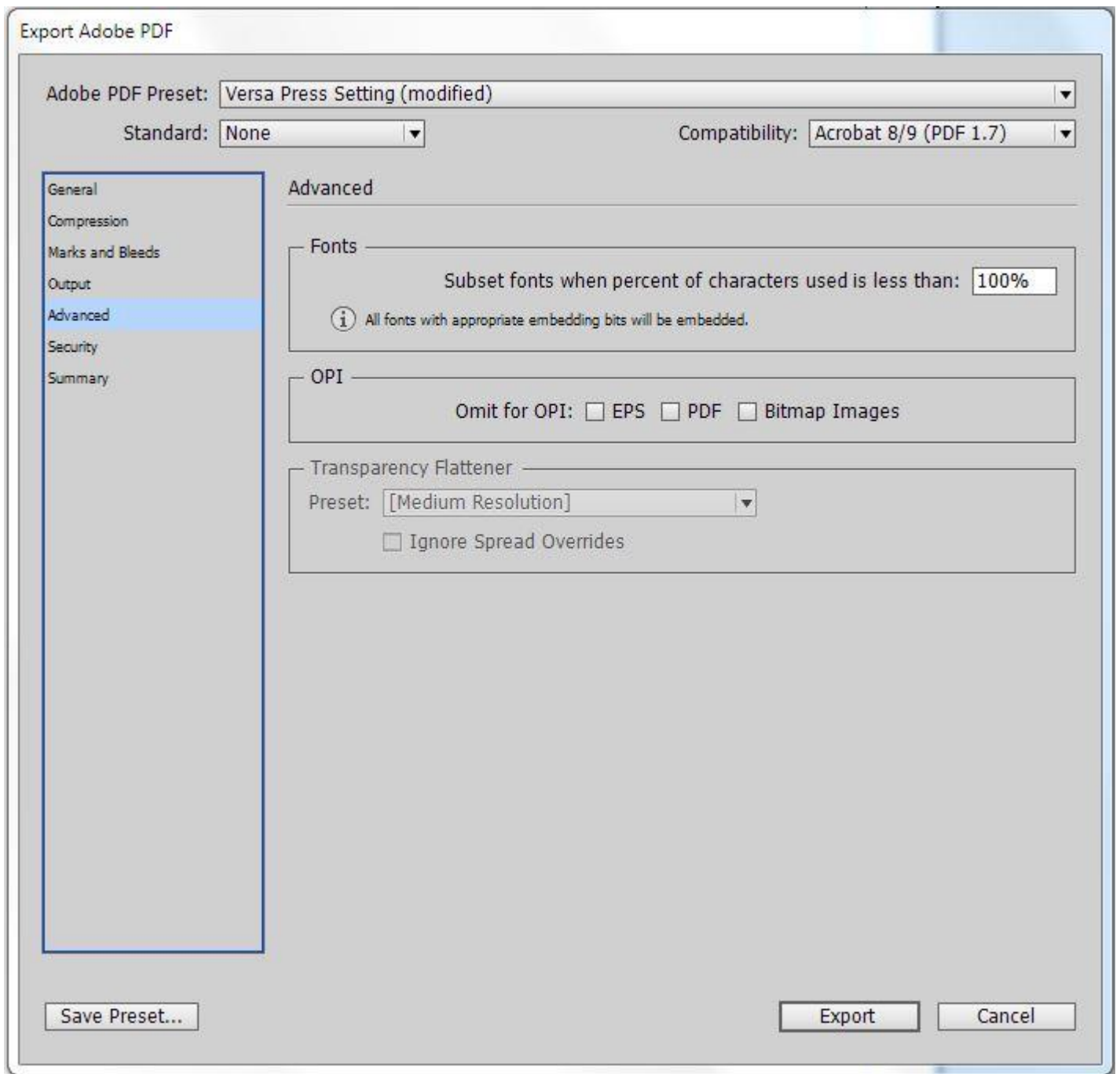
Step 5

- Select the **Output** tab.
- Adjust your settings to match the following illustration.



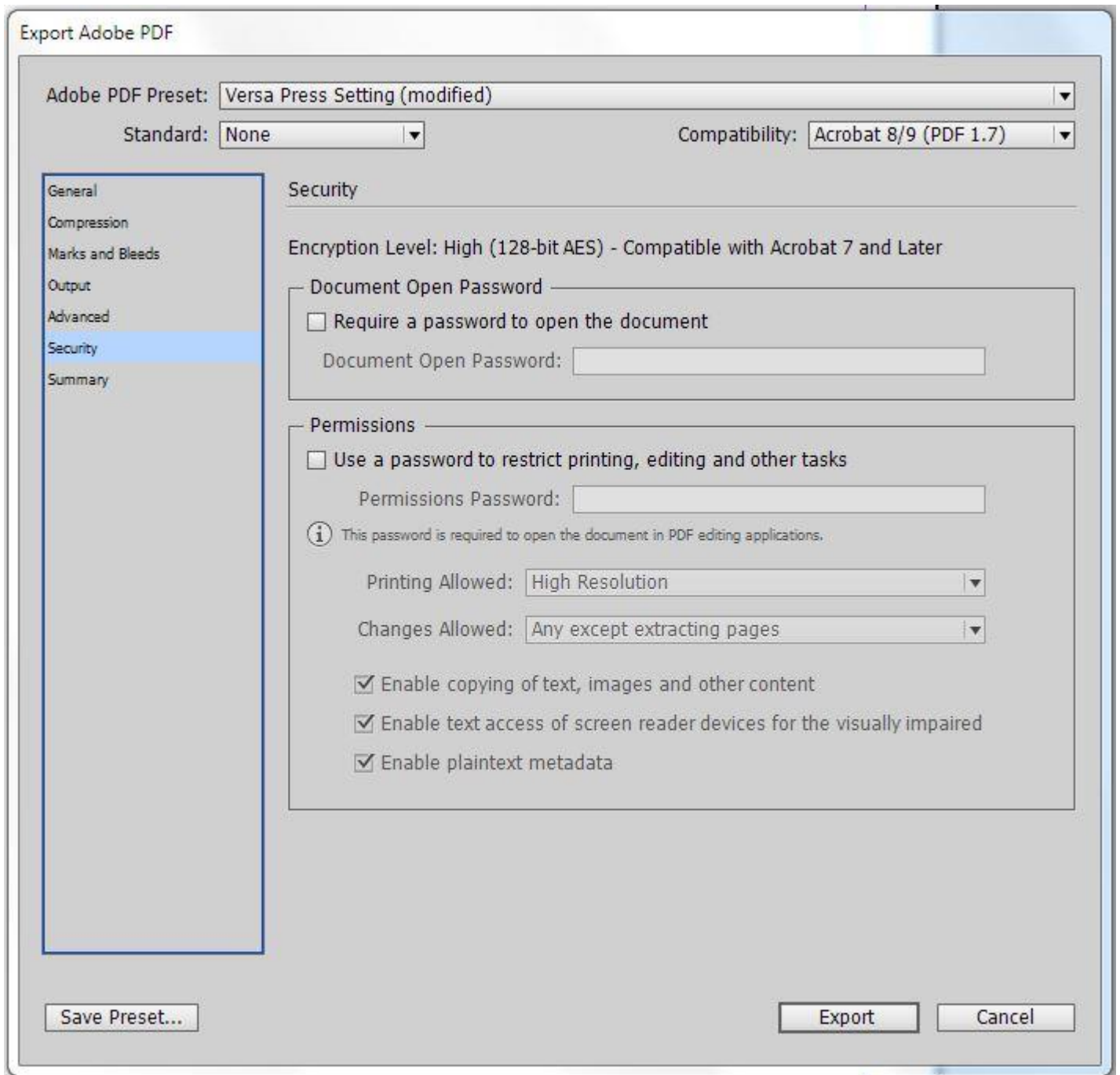
Step 6

- Select the **Advanced** tab.
- Adjust your settings to match the following illustration.



Step 7

- Select the **Security** tab.
- Adjust your settings to match the following illustration.



Step 8

- Click Save Preset and save your Preset.
- Click the 'Export' button

